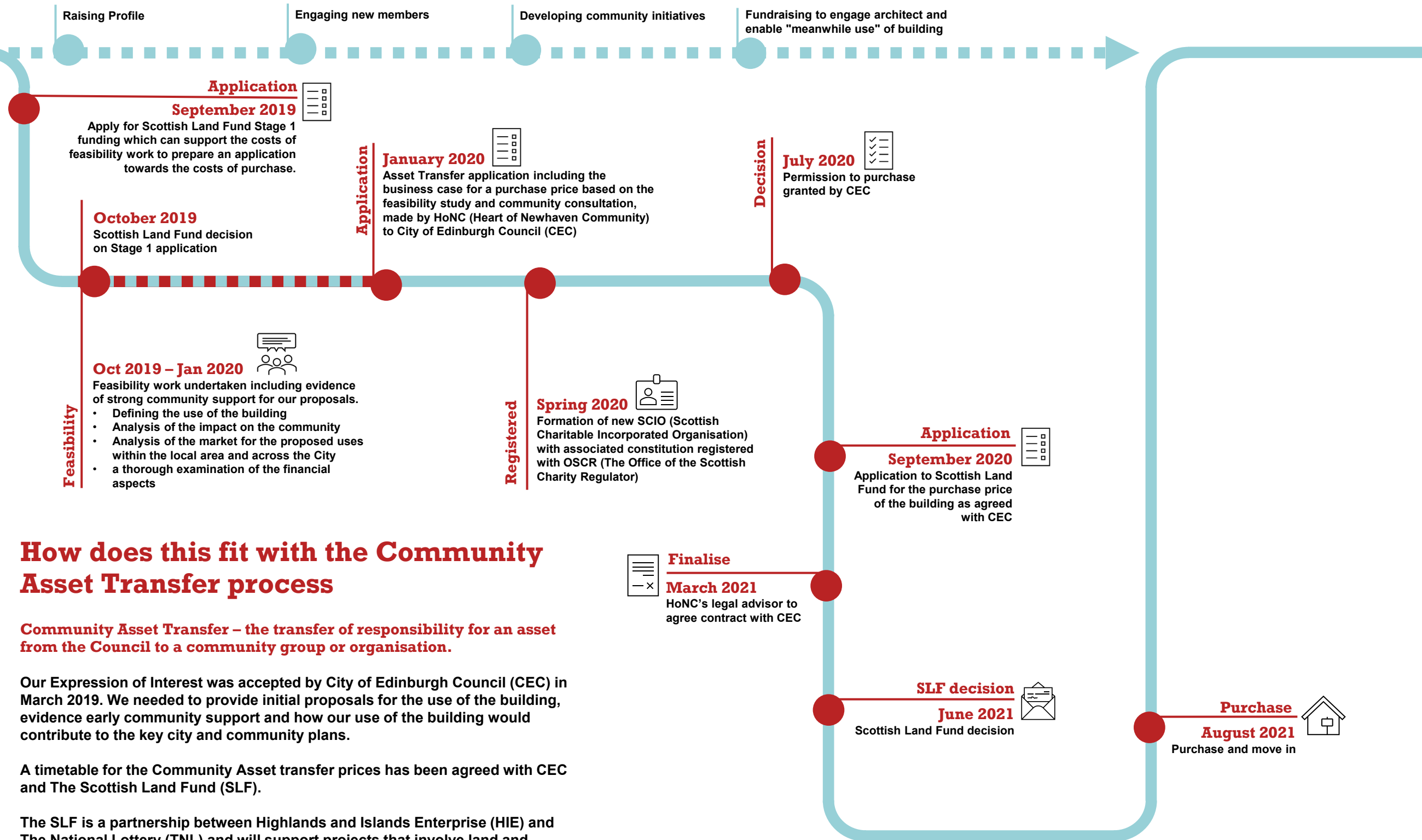


Where we are and what happens next



How does this fit with the Community Asset Transfer process

Community Asset Transfer – the transfer of responsibility for an asset from the Council to a community group or organisation.

Our Expression of Interest was accepted by City of Edinburgh Council (CEC) in March 2019. We needed to provide initial proposals for the use of the building, evidence early community support and how our use of the building would contribute to the key city and community plans.

A timetable for the Community Asset transfer prices has been agreed with CEC and The Scottish Land Fund (SLF).

The SLF is a partnership between Highlands and Islands Enterprise (HIE) and The National Lottery (TNL) and will support projects that involve land and property ownership that are community-led, community controlled and deliver positive socio-economic impacts.